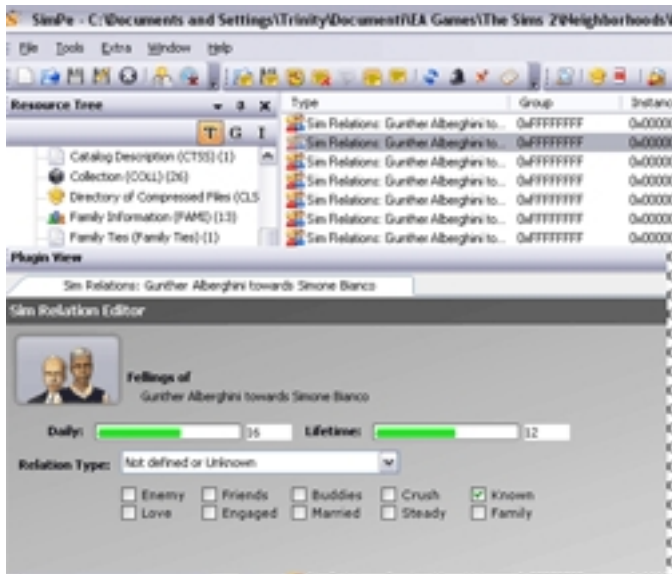


Written by CriCri

Wednesday, 12 January 2011 17:08 - Last Updated Thursday, 13 January 2011 01:28



SimPE is an Editor especially designed for modding *The Sims 2*. Whatever you want to change in your Game, SimPE can do it. It can perform simple tasks like tweaking your Neighborhoods, as well as more complex Operations, like Creating new Objects. It ships with a Plugin called **Scan Folder**, which you can use to Maintain all your Downloads, find some faulty packages (including Neighborhoods) and Fix them.

[Download \(free\) &qt;&qt;](#)

Remember that you need [Microsoft Framework 2](#) (instead the oldest version that works with 1.1) to install and run Simpe. For the best use of Object Workshop you need [DDS Utilities](#)